

2018

2018 1 1 -12 31

2019 3

2020



.....	5
.       .....	5
.....	5
.....	6
.....	6
.           .....	7
.....	7
.....	7
.....	8
.....	8
.....	9
.           .....	10
.....	10
.....	11
.....	12
.....	13
.....	14
.           .....	15
.....	15
.....	15
.....	15
.....	15
.....	16
.           .....	16
.....	16
.....	17
.....	17
.....	17
.....	18
.....	19
.....	20
.....	20
.....	20
.           .....	21



2018

2018

2018

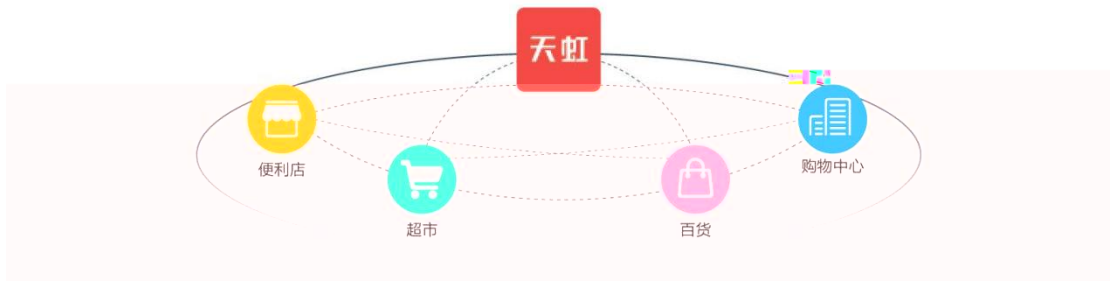
.

002419

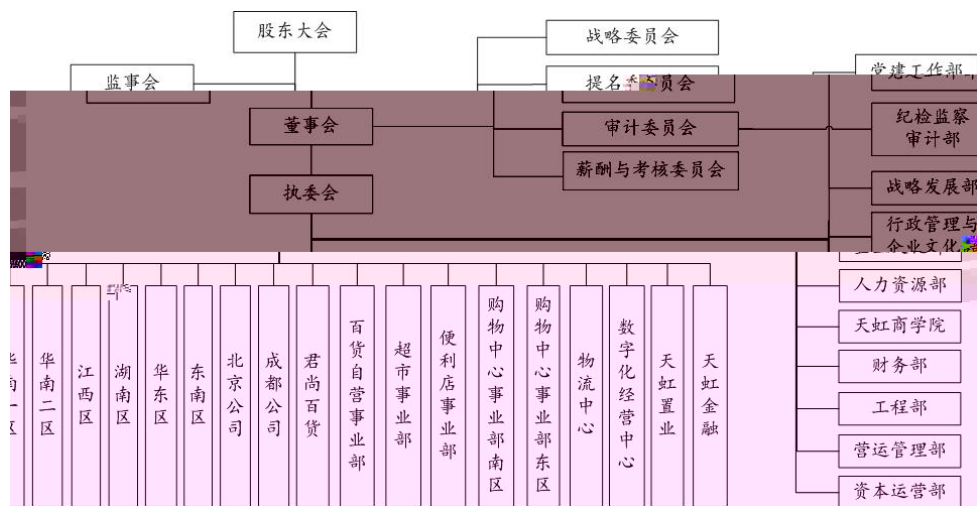
1984

APP

sp@ce



2018 12  
 8 25 13 1 1  
 68 4 81 6 ) 159  
 Ipark ,



	2016	2017	2018
	2,515,060	2,648,196	2,727,070
	1,727,296	1,853,535	1,913,795
	71,529	93,126	116,880

2018

8.07

.

<http://www.cninfo.com.cn>



2017	36,009	71,819	50.14%
2016	28,807	52,411	54.96%
2015	44,011	120,841	36.42%

2018

1

2

1

,

2

3

4

3

2018

•

2018

1 :

/

2 :





2018

1  
2018

,

2

2018

BBC

BBC

2.

2018

20

300



2017

•

2B

2018 ,

APP

2-3

20

2018 4 1

+

+

2018

20

•

2018

4

300

2018

2018 12 18

6

81

16



71

KPI

OKR

KPI

2018

580

/

1

2018

6

900



295

70

31.8

2018

100%

1 1

2018 12

120

2018 12

	99.6%	0.4%	8605
	99.6%	0.4%	1206
	99.2%	0.8%	827
	99.2%	0.8%	4030
	98.4%	1.6%	373
	99.5%	0.5%	184

	5459	36%
	9766	64%
	15225	100%

41	3808	25%
31-40	6124	40%
30	5293	35%
	15225	100%

2018 11  
5000 / 1  
15000  
2019 10 /  
1000 /

2018 4

+

2013

2019 1 1288

153

166

140

2018

•

2018

2018 3 23

,

6 ,

3000

9 16

3

2018 6

5 26

6 16

9

10 7

U+

10 20

300

280

11

12

12 27

8 -9

5

9 28 -10 3

FILA

1700

2018 1 24

3 2

2000

6 15

3

6 7-8

2

2000

9

9 20

10 18 ,

2018 3 24

70

60+

4

4 29



5

5 5

1500

5 5

5 19

6 30

200

8 20

Plogging

10 13

•

2018

1000

LED

15

LED

2018

2018

2017

966

3%

1187

2018

GB\T23331-2012;RB\T107-2013

QA

•

2018 2

40

4

8			2017	50
9			2018	
11			2018 CCFA	
		2018 CCFA		
" "		"		
11				40
12		2018		
2018				
				AAA
2019	1	PRO	2018	
.		<b>2019</b>		
			2019	

2019

,

2019

ISO22000

,